

onyx

LIV 3

SHOWROOM  
EXCLUSIVE

# INSPIRED DESIGN. INNOVATIVE ENGINEERING.

The Onyx Liv 3 combines a sophisticated cylindrical design with stunningly realistic flames and log effects. Adding poise and allure to any interior, this elegant gas stove will create an unmistakably contemporary centrepiece in your home.

Beyond the sweeping curves and clean lines, front and side glass panels showcase the Liv 3's panoramic flames, providing 180° views for maximum visibility. Inside, life-like flame burner technology creates a tall, lazy fire which dances through highly realistic logs.

Enhancing the three-sided flame visuals, EchoFlame™ Black Glass provides a mirror polished backdrop to the Liv 3's flame picture, for increased visual depth and definition.

Conventional flue and balanced flue options mean that the Liv 3 stove can be installed with or without a chimney. For masonry chimney installations, the conventional flue Liv 3 can be fitted with our linerless flue kit instead of a full chimney liner, facilitating a simpler and more cost-effective installation.







# onyx. experience the exceptional.

When you choose Onyx, you are choosing more than just a fire or stove. You are choosing the pinnacle of British innovation and quality. You are choosing prestige. As part of the Stovax Heating Group, Onyx is the culmination of over 40 years of experience designing and crafting best-in-class heating products. Every fire and stove is born in our state-of-the-art research and development laboratories, and incorporates industry leading technology and design.

## THE ONYX RETAILER NETWORK

We take great care to ensure that our fires are designed, tested, and manufactured to the highest possible quality and safety standards. We are just as determined to make sure they are sold and installed correctly so that you will enjoy years of pleasure from your purchase. Accordingly, you will find our Liv 3 range is exclusively available from our experienced, independent retailers' showrooms.

## the onyx promise

Your Onyx retailer will provide you with a Five-Year Warranty for your new gas stove providing it is registered with Onyx. Please note this warranty excludes certain consumable parts. Stoves purchased outside of Onyx's Expert Retailer Network will carry a standard One Year Non-Extendable Warranty, or minimum statutory warranty for your country. Full warranty terms and conditions are available at: [onyxfires.com](http://onyxfires.com)



 **View the Video**  
[onyxfires.com/liv3](http://onyxfires.com/liv3)

**FIND YOUR NEAREST ONYX SHOWROOM BY VISITING:**  
[onyxfires.com/retailers](http://onyxfires.com/retailers)



## COMPLETE CONTROL

The Onyx Liv 3 features a fully integrated control system, putting ignition, flame adjustment, heat output and extinguishing all in the palm of your hand. The included handset also lets you set the Liv 3 to thermostatically maintain your desired room temperature.



**View the Video**  
[onyxfires.com/liv3](https://onyxfires.com/liv3)

**ECHOFLAME™**  
BLACK GLASS LINING

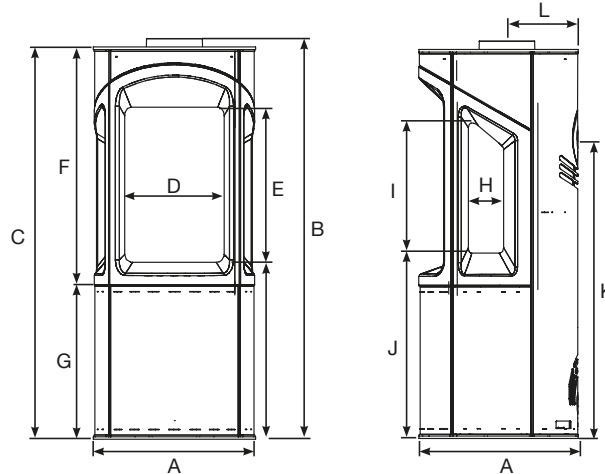
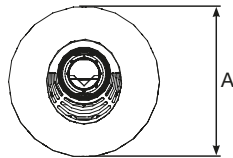
## KEY DETAILS

- Heat output: From 2.1 up to 4.5kW
- High Efficiency: CF: 78% / BF: 94.3%
- Energy Efficiency Class: CF: D BF: A
- Fully-sequential thermostatic Remote Control
- EchoFlame Black Glass lining for enhanced visual depth
- Conventional and balanced flue models
- Natural Gas and LPG options
- Optional linerless flue kit (Conventional Flue only) for installation into an existing chimney without the need for a flue liner.



## TECHNICAL INFORMATION

Product Code	Description
528-001	Onyx Liv 3 CF - Nat Gas
528-528	Onyx Liv 3 CF - LPG
528-123	Onyx Liv 3 BF - Nat Gas
528-406	Onyx Liv 3 BF - LPG
8736	Linerless Flue Kit



	A	B	C	D	E	F	G	H	I	J	K	L
Liv 3	498	CF: 1222 BF: 1230	1204	305	476	732	472	109	403	574	CF: 937 BF: 928	CF: 207 BF: 223

All dimensions in mm

## ADDITIONAL INFORMATION

### Product Improvement, Building Regulations & Photography

Onyx pursues a policy of continuous product improvement and our products may change following brochure photography. Exact product details should be discussed with your Onyx retailer at the time of purchase.

Given that building regulations are subject to constant change, some of the photography in this brochure may not comply with the requirements of the latest Building Regulations and you should always check your proposed installation arrangement with your qualified gas installer before proceeding.

### Installation and Safety

Onyx gas stoves must be fitted by a qualified gas installer (Gas Safe registered in the United Kingdom or Bord Gais registered in the Republic of Ireland). Please note that all parts of these stoves become extremely hot during operation and can result in serious injury and burns if touched. It is therefore recommended that a fireguard complying with BS 8423:2002 is used in the presence of young children, the elderly or infirm.

# onyx

### Stovax Heating Group Ltd

Spitfire Avenue, Skypark, Clyst Honiton,  
Exeter, Devon, EX5 2FR

Trade sales: 01392 261999 • Email: [info@onyxfires.com](mailto:info@onyxfires.com)

Export sales: +44 1392 261990 • Email: [exportsales@onyxfires.com](mailto:exportsales@onyxfires.com)



[onyxfires.com](http://onyxfires.com)



STOVAX  GAZCO

Find your nearest retailer by visiting:

[onyxfires.com/retailers](http://onyxfires.com/retailers)



LIVADD0823



Paper sourced from sustainable forests  
and printed using vegetable-based inks.

© All material copyright Gazco Ltd 2023 E & O E